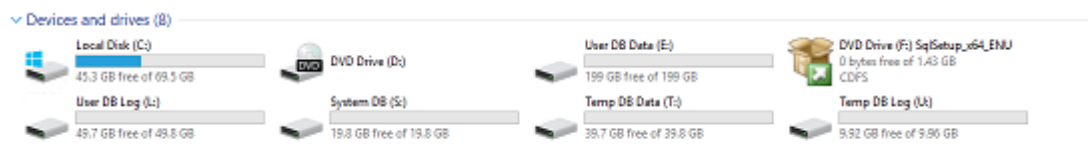
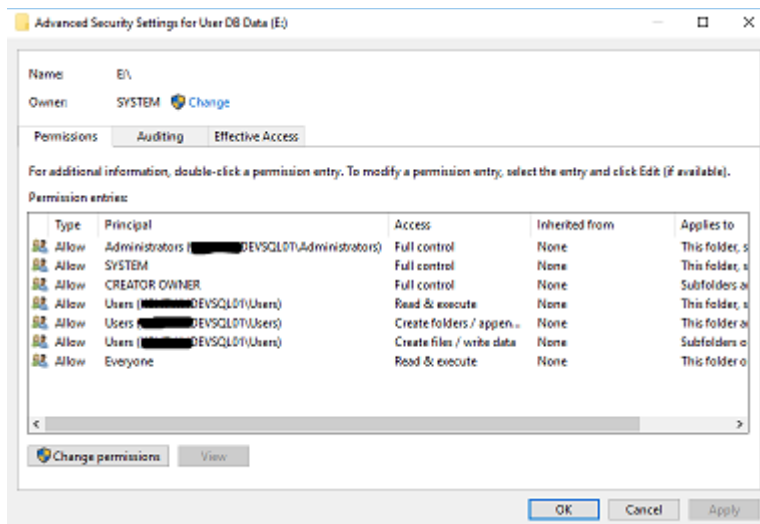


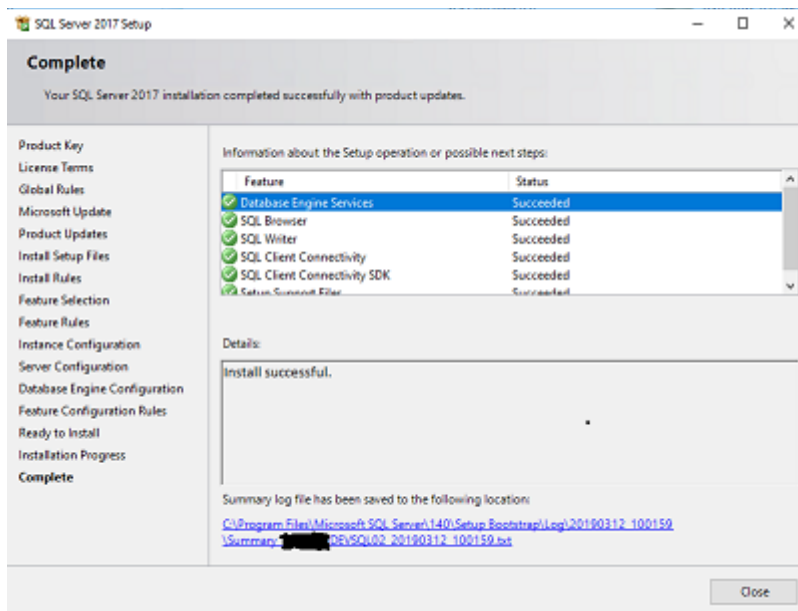
Drives before installation



Drive Properties & Principals before installation



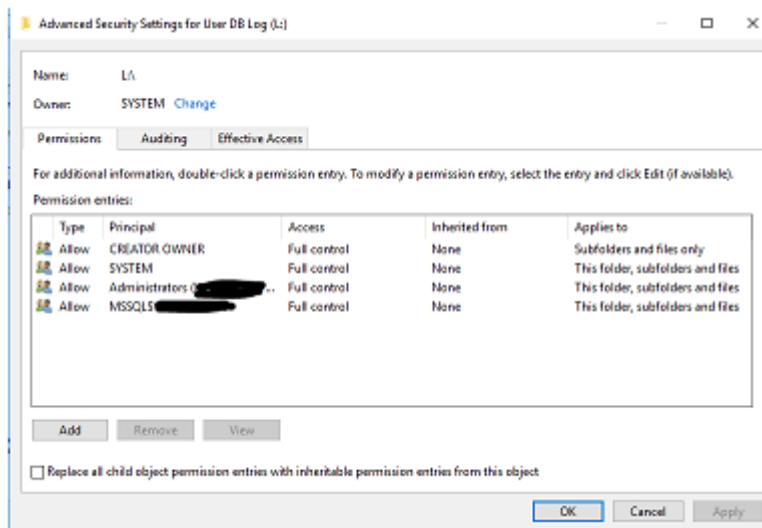
SQL server 2017 Installation successful



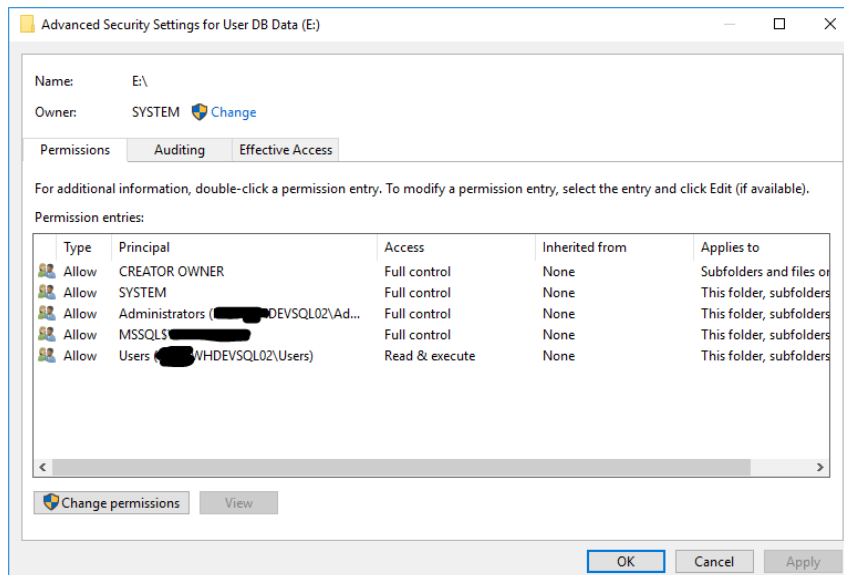
Drives after installation



Drive Properties & Principals after installation



Added Users principal with Read & Execute access to the drive security properties.



Recycle bin error after the above step

Recycle Bin



The Recycle Bin on E:\ is corrupted. Do you want to empty the Recycle Bin for this drive?

Yes

No